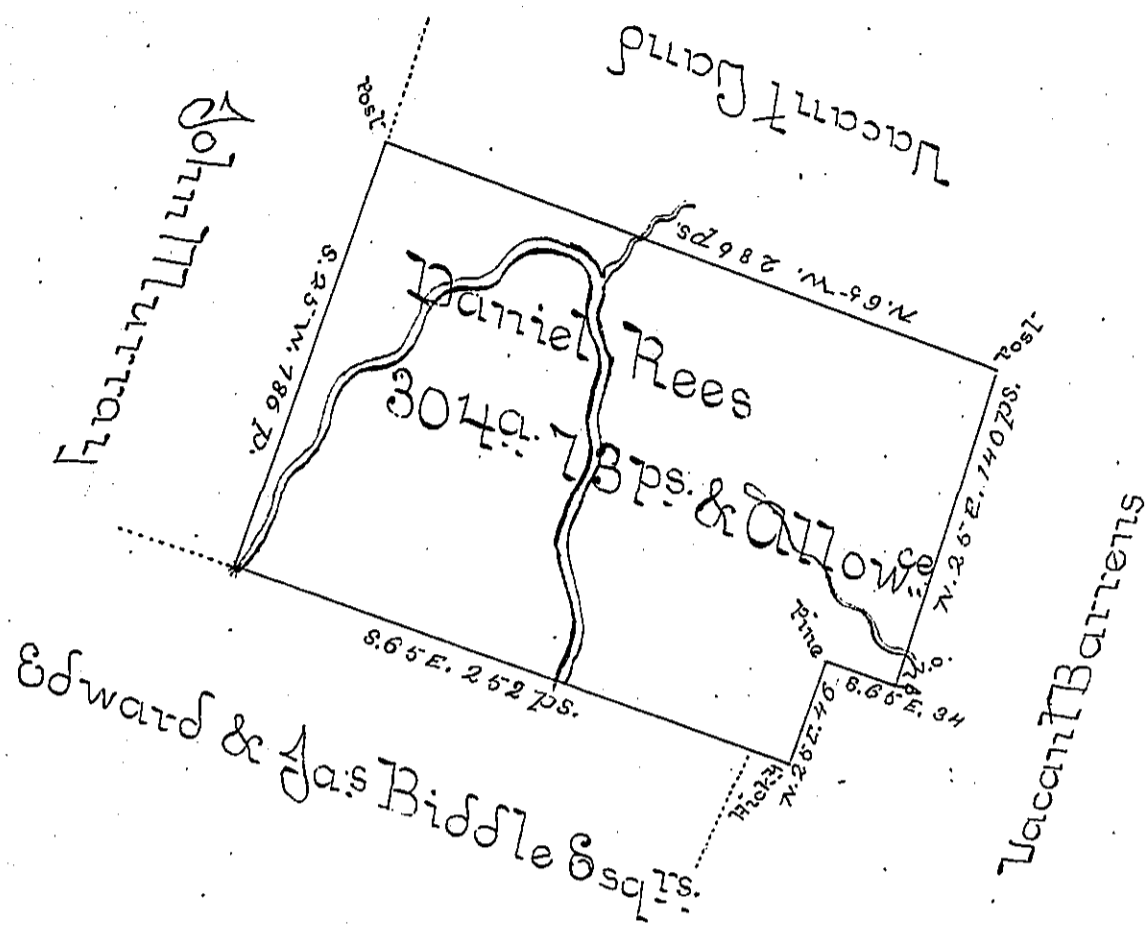


W



A Tract of a Tract of Land situate on a Branch of
 Shickling in Wyoming Township in the County of
 Northumberland Containing Three Hundred and four
 Acres & 73 Perches & the usual Allowance of Six Per Cent
 for Roads &c. Surveyed June 6th 1778 in Pursuance
 of the Honble. the Prop^{rs}.
 Warrant granted to Daniel Rees, Bearing date the
 26th Day of February 1776.

To John Lukens Esq^r
 Surveyor General of the
 Province of Pennsylvania

P^r Jno. Henderson Dep^t
 for this Service

IN TESTIMONY that the above is a copy of the original remaining on file in the
 Department of Internal Affairs of Pennsylvania, made con-
 formably to an Act of Assembly approved the 16th day of
 February, 1833, I have hereunto set my Hand and caused
 the Seal of said Department to be affixed at Harrisburg, this
 first day of October 1896.

James W. Patton
 Secretary of Internal Affairs.